



*속판 규격은 플라스틱 속판 기준이며, ()안은 철 속판 규격임.
The dimension of mounting plate is based on the plastic mounting plate
and the dimension of around bracket is steel mounting plate

Dimension (허용오차 ±1mm)

	Division	Size											
		W1	W2	W3	W4	H1	H2	H3	H4	D1	D2	D3	
BASE	225 × 275 × 120	225	201	183	160	276	253	234	210	90	30	98	
	275 × 225 × 120	276	253	234	210	225	201	183	160	90	30	98	
	200 × 300 × 150	200	176	152	129	300	276	252	226	120	30	128.5	
	300 × 200 × 150	300	276	252	226	200	176	152	129	120	30	128.5	
COVER BASE	200 × 300 × 180	200	176	152	129	300	276	252	226	150	30	158.5	
	300 × 200 × 180	300	276	252	226	200	176	152	129	150	30	158.5	
COVER + BASE	250 × 350 × 150	250	228	206	180	350	328	306	269	120	30	128.5	
	350 × 250 × 150	350	328	306	269	250	228	206	180	120	30	128.5	
	300 × 400 × 150	300	275	252	230	400	375	352	325	120	30	128	
MOUNTING PLATE (속판)	400 × 300 × 150	400	375	352	325	300	275	252	230	120	30	128	
	300 × 400 × 180	300	275	252	230	400	375	352	325	150	30	158	
	400 × 300 × 180	400	375	352	325	300	275	252	230	150	30	158	
	350 × 450 × 160	350	320	302	280	450	420	402	375	130	30	138	
	450 × 350 × 160	450	420	402	375	350	320	302	280	130	30	138	
	350 × 450 × 200	350	320	302	280	450	420	402	375	170	30	178	
방수, 방진 보호등급	IP 66/67	450 × 350 × 200	450	420	402	375	350	320	302	280	170	30	178
충격 테스트	IK 07/08	400 × 500 × 200	402	375	352	328	502	475	452	428	170	30	178
내도영역	ABS : -40~+85 PC : -40~+120	500 × 400 × 200	502	475	452	428	402	375	352	328	170	30	178
내역	ABS : 94-HB PC/ABS:94-V-0~5VA	400 × 600 × 230	402	370	352	328	602	570	552	525	200	30	208
	PC : 94-HB, 94-V-0~5VA	600 × 400 × 230	602	570	552	525	402	370	352	328	200	30	208

제품특징 Product characteristics

1. 스테인레스 재질의 힌지, 매미고리가 장착되어 개폐빈도가 높아도 파손이 거의 없습니다.
 2. 제품 사이즈의 증가에 따라 힌지, 매미고리의 크기를 상향시켜 개폐시 처짐을 방지하며 완벽한 밀폐력을 확보하였습니다.
 3. 고충격에 강한 재질과 제품의 구조를 더욱 보강하여 열악하고 위험한 산업현장에서도 적용되어 사용가능 하도록 만들었습니다.
1. It will not be damaged even using for a long time because stainless steel hinge and draw latch are equipped.
 2. It secures perfect airtightness by preventing sink down when opening or closing by increasing the sizes of hinge and draw latch by size increasing of the products.
 3. It can be used in inferior or dangerous industrial field by using strong material and structure.

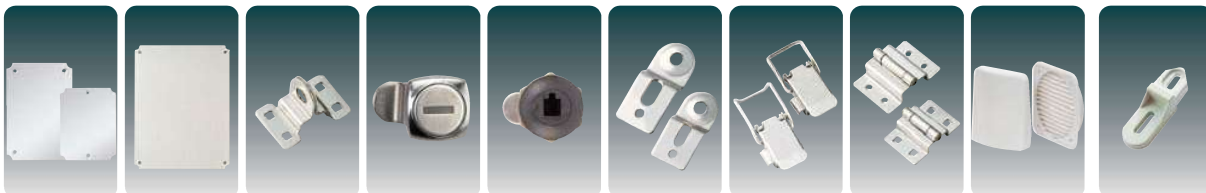


모델규격 Model and size

Model and size (cover included)		제품모델 Product model			속판모델 Plate Model		속판규격 Plate Size	
Width×Length×Height (mm)	Width×Length×Height (inch)	ABS	PC / ABS	PC	Steel mounting plate 1.6mm	Plastic mounting plate 3~4.5mm	M1	M2
		G: Grey Cover, T: Transparent Cover UL CE	G: Grey Cover, T: Transparent Cover UL CE	G: Grey Cover, T: Transparent Cover UL CE				
225 × 275 × 120	8,86 × 10,83 × 4,72	BC-A□H-222712	BC-P□H-222712	BC-C□H-222712	2227 S	2227 P	190	242
275 × 225 × 120	10,83 × 8,86 × 4,72	BC-A□H-272212	BC-P□H-272212	BC-C□H-272212	2227 S	2227 P	190	242
200 × 300 × 150	7,87 × 11,81 × 5,91	BC-A□H-203015	BC-P□H-203015	BC-C□H-203015	2030 S	2030 P	166	266
300 × 200 × 150	11,81 × 7,87 × 5,91	BC-A□H-302015	BC-P□H-302015	BC-C□H-302015	2030 S	2030 P	166	266
200 × 300 × 180	7,87 × 11,81 × 7,09	BC-A□H-203018	BC-P□H-203018	BC-C□H-203018	2030 S	2030 P	166	266
300 × 200 × 180	11,81 × 7,87 × 7,09	BC-A□H-302018	BC-P□H-302018	BC-C□H-302018	2030 S	2030 P	166	266
250 × 350 × 150	9,84 × 13,78 × 5,91	BC-A□H-253515	BC-P□H-253515	BC-C□H-253515	2535 S	2535 P	216	316
350 × 250 × 150	13,78 × 9,84 × 5,91	BC-A□H-352515	BC-P□H-352515	BC-C□H-352515	2535 S	2535 P	216	316
300 × 400 × 150	11,81 × 15,75 × 5,91	BC-A□H-304015	BC-P□H-304015	BC-C□H-304015	3040 S	3040 P	265	365
400 × 300 × 150	15,75 × 11,81 × 5,91	BC-A□H-403015	BC-P□H-403015	BC-C□H-403015	3040 S	3040 P	265	365
300 × 400 × 180	11,81 × 15,75 × 7,09	BC-A□H-304018	BC-P□H-304018	BC-C□H-304018	3040 S	3040 P	265	365
400 × 300 × 180	15,75 × 11,81 × 7,09	BC-A□H-403018	BC-P□H-403018	BC-C□H-403018	3040 S	3040 P	265	365
350 × 450 × 160	13,78 × 17,72 × 6,30	BC-A□H-354516	BC-P□H-354516	BC-C□H-354516	3545 S	3545 P	306	407
450 × 350 × 160	17,72 × 13,78 × 6,30	BC-A□H-453516	BC-P□H-453516	BC-C□H-453516	3545 S	3545 P	306	407
350 × 450 × 200	13,78 × 17,72 × 7,87	BC-A□H-354520	BC-P□H-354520	BC-C□H-354520	3545 S	3545 P	306	407
450 × 350 × 200	17,72 × 13,78 × 7,87	BC-A□H-453520	BC-P□H-453520	BC-C□H-453520	3545 S	3545 P	306	407
400 × 500 × 200	15,75 × 19,69 × 7,87	BC-A□H-405020	BC-P□H-405020	BC-C□H-405020	4050 S	4050 P	358	458
500 × 400 × 200	19,69 × 15,75 × 7,87	BC-A□H-504020	BC-P□H-504020	BC-C□H-504020	4050 S	4050 P	358	458
400 × 600 × 230	15,75 × 23,62 × 9,06	BC-A□H-406023	BC-P□H-406023	BC-C□H-406023	4060 S	4060 P	358	558
600 × 400 × 230	23,62 × 15,75 × 9,06	BC-A□H-604023	BC-P□H-604023	BC-C□H-604023	4060 S	4060 P	358	558

* 600 × 400 × 230은 비방수용입니다. 600 × 400 × 230 is for non water proof product.

전용 액세서리 Accessories



■ 철속판(아연도금) Steel mounting plate(Zinc plating) ■ 플라스틱속판(ABS) Plastic mounting plate (ABS) ■ 자물쇠 걸이(K40) Key ring (K40) ■ 잠금장치(SK) Locker (SK) ■ 플라스틱잠금장치(PK) Plastic locker(PK) ■ 브라켓(B40, B50, B60) Wall mounting bracket (B40, B50, B60) ■ 매미고리(M75, M65) Draw latch(M65, M75) ■ 힌지(H75 H65) Hinge(H65, H75) ■ 환기구(V60, V80) Vent(V60, V80) ■ 플라스틱 브라켓(PB50) plastic bracket(PB50)

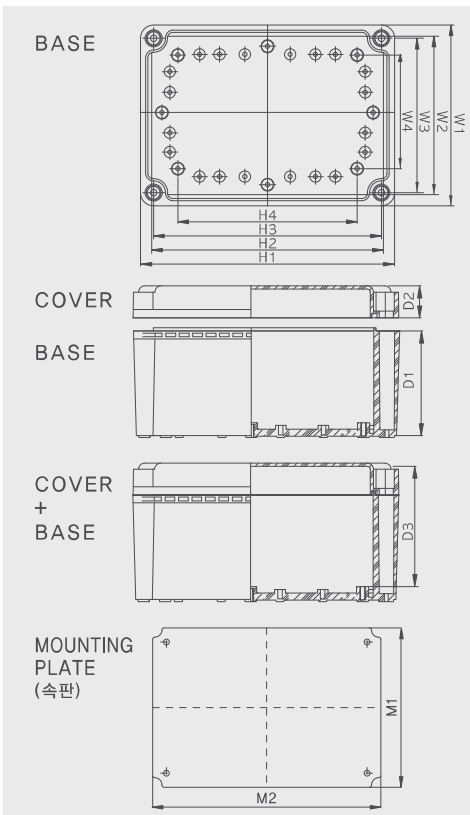
H시리즈 (힌지 타입) 중형 사이즈

H Series – Medium size



*속판 규격은 플라스틱 속판 기준이며, ()안은 철 속판 규격임.
The dimension of mounting plate is based on the plastic mounting plate and the dimension of around bracket is steel mounting plate

Dimension (허용오차 ±1mm)



Division Size	W1	W2	W3	W4	H1	H2	H3	H4	D1	D2	D3
190×190×130	190	169	90	120	190	169	150	120	98	30	112
190×280×130	190	169	150	120	280	259	182	210	98	30	112
280×190×130	280	259	182	210	190	169	150	120	98	30	112
190×280×180	190	169	150	120	280	259	182	210	150	30	159
280×190×180	280	259	182	210	190	169	150	210	150	30	159
190×380×130	190	169	150	120	380	359	282	310	98	30	109
380×190×130	380	359	282	310	190	169	150	120	98	30	109
190×380×180	190	169	150	120	380	359	282	310	150	30	159
380×190×180	380	359	282	310	190	169	150	120	150	30	159
280×280×130	280	259	183	210	280	259	240	210	98	30	112
280×340×130	280	258	240	210	340	318	244	270	100	30	111
340×280×130	340	318	244	270	280	258	240	210	100	30	111
280×380×130	280	259	240	210	380	359	284	310	98	30	111
380×280×130	380	359	284	310	280	259	240	210	98	30	111
280×380×180	280	259	240	210	380	359	284	310	148	30	161.5
380×280×180	380	359	284	310	280	259	240	210	148	30	161.5
280×560×130	280	259	240	210	560	535	460	490	100	30	120
560×280×130	560	535	460	490	280	259	240	210	100	30	120
330×430×180	330	305	290	260	430	405	335	360	150	30	160
430×330×180	430	405	335	360	330	305	290	260	150	30	160
380×560×180	380	355	340	310	560	535	460	490	150	30	160
560×380×180	560	535	460	490	360	355	340	310	150	30	160

방수,방진 보호등급	IP 66/67
충격테스트	IK 07/08
온도영역	ABS : -40~+85 PC : -40~+120
난연성	ABS : 94-HB PC/ABS : 94-V-0~5VA PC : 94-HB, 94-V-0~5VA

제품특징 Product characteristics

1. 스테인레스 재질의 힌지, 매미고리가 장착되어 개폐빈도가 높아도 파손이 거의 없습니다.
 2. 제품 설계시부터 볼트개폐형과 스테인레스 재질의 힌지, 매미고리 장착을 고려하여 만든 제품으로 밀폐력이 우수합니다.
 3. 사용자의 편의에 의하여 직접 고리를 장착할 시에도 간단하게 장착할 위치에 쉽게 타공할 수 있도록 기능을 추가하여 만든 제품입니다.
1. It will not be damaged even using for a long time because stainless steel hinge and draw latch are equipped.
 2. It has excellent airtightness as it was designed considering bolt open/close type, hinge made of stainless steel and equipment of draw latch.
 3. User make hole on the place of equipment simply.



모델규격 Model and size

Model and size (cover included)		제품모델 Product model			속판모델 Plate Model		속판규격 Plate Size	
Width×Length×Height (mm)	Width×Length×Height (inch)	ABS	PC / ABS	PC	Steel mounting plate 1.6mm	Plastic mounting plate 3~4.5mm	M1	M2
		G:Grey Cover,T:Transparent Cover UL CE	G:Grey Cover,T:Transparent Cover UL CE	G:Grey Cover,T:Transparent Cover UL CE				
190×190×130	7.48×7.48×5.12	BC-A□H-191913	BC-P□H-191913	BC-C□H-191913	1919 S	1919 P	159	159
190×280×130	7.48×11.02×5.12	BC-A□H-192813	BC-P□H-192813	BC-C□H-192813	1928 S	1928 P	159	248
280×190×130	11.02×7.48×5.12	BC-A□H-281913	BC-P□H-281913	BC-C□H-281913	2819 S	2819 P	159	248
190×280×180	7.48×11.02×7.09	BC-A□H-192818	BC-P□H-192818	BC-C□H-192818	1928 S	1928 P	159	248
280×190×180	11.02×7.48×7.09	BC-A□H-281918	BC-P□H-281918	BC-C□H-281918	2819 S	2819 P	159	248
190×380×130	7.48×14.96×5.12	BC-A□H-193813	BC-P□H-193813	BC-C□H-193813	1938 S	1938 P	159	348
380×190×130	14.96×7.48×5.12	BC-A□H-381913	BC-P□H-381913	BC-C□H-381913	3819 S	3819 P	159	348
190×380×180	7.48×14.96×7.09	BC-A□H-193818	BC-P□H-193818	BC-C□H-193818	1938 S	1938 P	159	348
380×190×180	14.96×7.48×7.09	BC-A□H-381918	BC-P□H-381918	BC-C□H-381918	3819 S	3819 P	159	348
280×280×130	11.02×11.02×5.12	BC-A□H-282813	BC-P□H-282813	BC-C□H-282813	2828 S	2828 P	248	248
280×340×130	11.02×13.39×5.12	BC-A□H-283413	BC-P□H-283413	BC-C□H-283413	2834 S	2834 P	248	308
340×280×130	13.39×11.02×5.12	BC-A□H-342813	BC-P□H-342813	BC-C□H-342813	3428 S	3428 P	308	248
280×380×130	11.02×14.96×5.12	BC-A□H-283813	BC-P□H-283813	BC-C□H-283813	2838 S	2838 P	248	348
380×280×130	14.96×11.02×5.12	BC-A□H-382813	BC-P□H-382813	BC-C□H-382813	3828 S	3828 P	248	348
280×380×180	11.02×14.96×7.09	BC-A□H-283818	BC-P□H-283818	BC-C□H-283818	2838 S	2838 P	248	348
380×280×180	14.96×11.02×7.09	BC-A□H-382818	BC-P□H-382818	BC-C□H-382818	3828 S	3828 P	348	348
280×560×130	11.02×22.05×5.12	BC-A□H-285613	BC-P□H-285613	BC-C□H-285613	2856 S		(232)	(535)
560×280×130	22.05×11.02×5.12	BC-A□H-562813	BC-P□H-562813	BC-C□H-562813	5828 S		(232)	(535)
330×430×180	12.99×16.93×7.09	BC-A□H-334318	BC-P□H-334318	BC-C□H-334318	3343 S	3343 P	(295)	(395)
430×330×180	16.93×12.99×7.09	BC-A□H-433318	BC-P□H-433318	BC-C□H-433318	4333 S	3343 P	(295)	(395)
380×560×180	14.96×22.05×7.09	BC-A□H-385618	BC-P□H-385618	BC-C□H-385618	3856 S		(345)	(535)
560×380×180	22.05×14.96×7.09	BC-A□H-563818	BC-P□H-563818	BC-C□H-563818	5638 S		(345)	(535)

※560×280×130, 560×380×180은 비방수용입니다. 560×280×130, 560×380×180 is for non water proof product.

전용 액세서리 Accessories

■ 철속판(아연도금) Steel mounting plate(Zinc plating)	■ 플라스틱속판(ABS) Plastic mounting plate(ABS)	■ 자물쇠 걸이(K40) Key ring (K40)	■ 잠금장치(SK) Lock (SK)	■ 플라스틱잠금장치(PK) Plastic locker (PK)
■ 잠금장치(B50) Wall mounting bracket (B50)	■ 매미고리(M65) Draw latch (M65)	■ 힌지(H65) Hinge (H65)	■ 마개(M22) Stopper (M22)	■ 환기구(V60, V80) Vent(V60, V80)
				■ 플라스틱 브라켓(PB50) plastic bracket(PB50)

H시리즈 (힌지 타입) 소형 사이즈

H Series - Small size



*속판 규격은 플라스틱 속판 기준이며, ()안은 철 속판 규격임.
The dimension of mounting plate is based on the plastic mounting plate and the dimension of around bracket is steel mounting plate

Dimension (허용오차 ±1mm)

BASE	COVER	BASE	COVER + BASE	MOUNTING PLATE (속판)	Division											
					Size	W1	W2	W3	W4	H1	H2	H3	H4	D1	D2	D3
					80×110×70	80	71	62	0	110	101	92	80	50	20	53
					110×80×70	110	101	92	80	80	71	62	0	50	20	53
					80×110×85	80	71	62	0	110	101	92	80	50	35	68
					110×80×85	110	101	92	80	80	71	62	0	50	35	68
					80×130×70	80	71	62	0	130	121	112	100	50	20	53
					130×80×70	130	121	112	100	80	71	62	0	50	20	53
					80×130×85	80	71	62	0	130	121	112	100	50	35	68
					130×80×85	130	121	112	100	80	71	62	0	50	35	68
					80×180×70	80	71	62	0	180	171	162	150	50	20	53
					180×80×70	180	171	162	150	80	71	62	0	50	20	53
					80×180×85	80	71	62	0	180	171	162	150	50	35	68
					180×80×85	180	171	162	150	80	71	62	0	50	35	68
					80×250×70	80	71	62	0	250	241	232	220	50	20	52
					250×80×70	250	241	232	220	80	71	62	0	50	20	52
					80×250×85	80	71	62	0	250	241	232	220	50	35	67
					250×80×85	250	241	232	220	80	71	62	0	50	35	67
					100×100×75	101	92	82	0	100	92	82	60	55	20	58
					100×100×100	101	92	82	0	100	92	82	60	80	20	83
					125×125×75	125	115	105	0	125	115	105	70	55	20	58
					125×125×100	125	115	105	0	125	115	105	70	80	20	83
					125×175×75	127	118	109	0	175	166	157	140	50	25	58
					175×125×75	175	166	157	140	127	118	109	0	50	25	58
					125×175×100	127	118	109	0	175	166	157	140	50	50	83
					175×125×100	175	166	157	140	127	118	109	0	50	50	83
					140×170×95	143	134	122	0	173	164	152	130	75	20	77
					170×140×95	173	164	152	130	143	134	122	0	75	20	77
					140×230×95	140	131	122	0	230	221	212	190	75	20	77
					230×140×95	230	221	212	200	140	131	122	0	75	25	77
					150×150×75	150	141	132	0	150	141	132	110	55	20	58
					150×150×100	150	141	132	0	150	141	132	110	80	20	83
					150×200×75	150	140	132	0	200	191	182	160	55	20	58
					200×150×75	200	191	182	160	150	140	132	0	55	20	58
					150×200×100	150	140	132	0	200	191	182	160	80	20	83
					200×150×100	200	191	182	160	150	140	132	0	80	20	83
					150×200×130	150	140	132	0	200	191	182	160	110	20	111
					200×150×130	200	191	182	160	150	140	132	0	110	20	111
					150×200×160	150	140	132	0	200	191	182	160	110	50	149
					200×150×160	200	191	182	160	150	140	132	0	110	50	149
방수방진 보호등급	IP 66/67				150×250×100	150	141	132	0	250	241	232	210	80	20	83
					250×150×100	250	241	232	210	150	141	132	0	80	20	83
충격 테스트	IK 07/08				150×250×130	150	141	132	0	250	241	232	210	80	50	113
					250×150×130	250	241	232	210	150	141	132	0	80	50	113
내도영역	ABS : -40~+85 PC : -40~+120				200×200×100	200	190	182	150	200	190	182	120	80	20	82
					200×200×130	200	190	182	150	200	190	182	120	110	20	111
난연성	ABS : 94-HB PC/ABS : 94-V-0~5VA PC : 94-HB, 94-V-0~5VA				200×200×160	200	190	182	150	200	190	182	120	110	50	141
					210×230×100	210	201	192	160	230	221	212	180	80	20	87
					230×210×100	230	221	212	180	210	201	192	160	80	20	87

제품특징 Product characteristics

1. 스테인레스 재질의 힌지, 매미고리가 장착되어 개폐빈도가 높아도 파손이 거의 없습니다.
2. 공장 출고시 정확한 위치에 가공후 고리를 장착하므로 완벽한 밀폐력과 개폐의 편리성을 확보한 제품입니다.
3. 두께의 보강과 구조를 더욱 보완하여 장기간 사용이 가능하도록 만들었습니다.

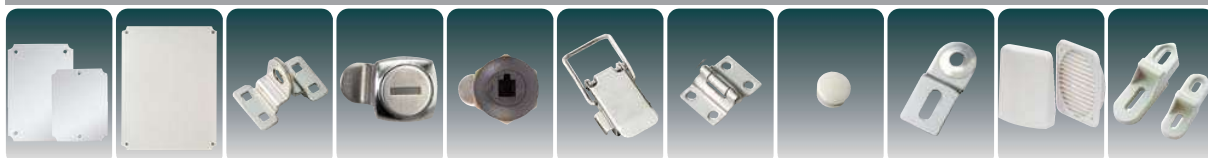
1. It will not be damaged even using for a long time because stainless steel hinge and draw latch are equipped.
2. Ring is equipped at correct place after processing so that it has perfect airtight and convenience to open and close.
3. We reinforce the thickness and structure to be used longer time.



모델규격 Model and size

Model and size (cover included)		제품모델 Product model			속판모델 Plate Model		속판규격 Plate Size	
Width×Length×Height (mm)	Width×Length×Height (inch)	ABS	PC / ABS	PC	Steel mounting plate 1.6mm	Plastic mounting plate 3~4.5mm	M1	M2
		G:Grey Cover,T:Transparent Cover	G:Grey Cover,T:Transparent Cover	G:Grey Cover,T:Transparent Cover				
80×110×70	3,15×4,33×2,76	BC-A□H-081107	BC-P□H-081107	BC-C□H-081107	0811 S	0811 P	64	94
110×80×70	4,33×3,15×2,76	BC-A□H-110807	BC-P□H-110807	BC-C□H-110807	1108 S	1108 P	64	94
80×110×85	3,15×4,33×3,35	BC-A□H-081108	BC-P□H-081108	BC-C□H-081108	0811 S	0811 P	64	94
110×80×85	4,33×3,15×3,35	BC-A□H-110808	BC-P□H-110808	BC-C□H-110808	1108 S	1108 P	64	94
80×130×70	3,15×5,12×2,76	BC-A□H-081307	BC-P□H-081307	BC-C□H-081307	0813 S	0813 P	65	115
130×80×70	5,12×3,15×2,76	BC-A□H-130807	BC-P□H-130807	BC-C□H-130807	1308 S	1308 P	65	115
80×130×85	3,15×5,12×3,35	BC-A□H-081308	BC-P□H-081308	BC-C□H-081308	0813 S	0813 P	65	115
130×80×85	5,12×3,15×3,35	BC-A□H-130808	BC-P□H-130808	BC-C□H-130808	1308 S	1308 P	65	115
80×180×70	3,15×7,09×2,76	BC-A□H-081807	BC-P□H-081807	BC-C□H-081807	0818 S	0818 P	65	165
180×80×70	7,09×3,15×2,76	BC-A□H-180807	BC-P□H-180807	BC-C□H-180807	1808 S	1808 P	65	165
80×180×85	3,15×7,09×3,35	BC-A□H-081808	BC-P□H-081808	BC-C□H-081808	0818 S	0818 P	65	165
180×80×85	7,09×3,15×3,35	BC-A□H-180808	BC-P□H-180808	BC-C□H-180808	1808 S	1808 P	65	165
80×250×70	3,15×9,84×2,76	BC-A□H-082507	BC-P□H-082507	BC-C□H-082507	0825 S	0825 P	65	235
250×80×70	9,84×3,15×2,76	BC-A□H-250807	BC-P□H-250807	BC-C□H-250807	2508 S	2508 P	65	235
80×250×85	3,15×9,84×3,35	BC-A□H-082508	BC-P□H-082508	BC-C□H-082508	0825 S	0825 P	65	235
250×80×85	9,84×3,15×3,35	BC-A□H-250808	BC-P□H-250808	BC-C□H-250808	2508 S	2508 P	65	235
100×100×75	3,94×3,94×2,95	BC-A□H-101007	BC-P□H-101007	BC-C□H-101007	1010 S	1010 P	82	82
100×100×100	3,94×3,94×3,94	BC-A□H-101010	BC-P□H-101010	BC-C□H-101010	1010 S	1010 P	82	82
125×125×75	4,92×4,92×2,95	BC-A□H-121207	BC-P□H-121207	BC-C□H-121207	1212 S	1212 P	107	107
125×125×100	4,92×4,92×3,94	BC-A□H-121210	BC-P□H-121210	BC-C□H-121210	1212 S	1212 P	107	107
125×175×75	4,92×6,89×2,95	BC-A□H-121707	BC-P□H-121707	BC-C□H-121707	1217 S	1217 P	113	161
175×125×75	6,89×4,92×2,95	BC-A□H-171207	BC-P□H-171207	BC-C□H-171207	1712 S	1712 P	113	161
125×175×100	4,92×6,89×3,94	BC-A□H-121710	BC-P□H-121710	BC-C□H-121710	1217 S	1217 P	113	161
175×125×100	6,89×4,92×3,94	BC-A□H-171210	BC-P□H-171210	BC-C□H-171210	1712 S	1712 P	113	161
140×170×95	5,51×6,69×3,74	BC-A□H-141709	BC-P□H-141709	BC-C□H-141709	1417 S	1417 P	126	155
170×140×95	6,69×5,51×3,74	BC-A□H-171409	BC-P□H-171409	BC-C□H-171409	1714 S	1714 P	126	155
140×230×95	5,51×9,06×3,74	BC-A□H-142309	BC-P□H-142309	BC-C□H-142309	1423 S	1423 P	122	212
230×140×95	9,06×5,51×3,74	BC-A□H-231409	BC-P□H-231409	BC-C□H-231409	2314 S	2314 P	122	212
150×150×75	5,91×5,91×2,95	BC-A□H-151507	BC-P□H-151507	BC-C□H-151507	1515 S	1515 P	123	123
150×150×100	5,91×5,91×3,94	BC-A□H-151510	BC-P□H-151510	BC-C□H-151510	1515 S	1515 P	123	123
150×200×75	5,91×7,87×2,95	BC-A□H-152007	BC-P□H-152007	BC-C□H-152007	1520 S	1520 P	129	179
200×150×75	7,87×5,91×2,95	BC-A□H-201507	BC-P□H-201507	BC-C□H-201507	2015 S	2015 P	129	179
150×200×100	5,91×7,87×3,94	BC-A□H-152010	BC-P□H-152010	BC-C□H-152010	1520 S	1520 P	129	179
200×150×100	7,87×5,91×3,94	BC-A□H-201510	BC-P□H-201510	BC-C□H-201510	2015 S	2015 P	129	179
150×200×130	5,91×7,87×5,12	BC-A□H-152013	BC-P□H-152013	BC-C□H-152013	1520 S	1520 P	129	179
200×150×130	7,87×5,91×5,12	BC-A□H-201513	BC-P□H-201513	BC-C□H-201513	2015 S	2015 P	129	179
150×200×160	5,91×7,87×6,30	BC-A□H-152016	BC-P□H-152016	BC-C□H-152016	2020 S	2020 P	129	179
200×150×160	7,87×5,91×6,30	BC-A□H-201516	BC-P□H-201516	BC-C□H-201516	2020 S	2020 P	129	179
150×250×100	5,91×9,84×3,94	BC-A□H-152510	BC-P□H-152510	BC-C□H-152510	1525 S	1525 P	129	224
250×150×100	9,84×5,91×3,94	BC-A□H-251510	BC-P□H-251510	BC-C□H-251510	2515 S	2515 P	129	224
150×250×130	5,91×9,84×5,12	BC-A□H-152513	BC-P□H-152513	BC-C□H-152513	1525 S	1525 P	129	224
250×150×130	9,84×5,91×5,12	BC-A□H-251513	BC-P□H-251513	BC-C□H-251513	2515 S	2515 P	129	224
200×200×100	7,87×7,87×3,94	BC-A□H-202010	BC-P□H-202010	BC-C□H-202010	2020 S	2020 P	179	179
200×200×130	7,87×7,87×5,12	BC-A□H-202013	BC-P□H-202013	BC-C□H-202013	2020 S	2020 P	179	179
200×200×160	7,87×7,87×6,30	BC-A□H-202016	BC-P□H-202016	BC-C□H-202016	2020 S	2020 P	179	179
210×230×100	8,27×9,06×3,94	BC-A□H-212310	BC-P□H-212310	BC-C□H-212310	2123 S		196,5	216
230×210×100	9,06×8,27×3,94	BC-A□H-232110	BC-P□H-232110	BC-C□H-232110	2123 S		196,5	216

전용 액세서리 Accessories



■ 철속판(아연도금) Steel mounting plate(Zinc plating) ■ 플라스틱속판(ABS) Plastic mounting plate (ABS) ■ 지물쇠 걸이(K40) Key ring (K40) ■ 잠금장치(SK) Locker(SK) ■ 플라스틱잠금장치(PK) Plastic locker(PK) ■ 매미고리(M55) Draw latch(M55) ■ 힌지(H55) Hinge(H55) ■ 마개(M11) Stopper(M11) ■ 브라켓(B40, B50, B60) Wall mounting bracket (B40, B50, B60) ■ 환기구(V80, V60) Vent(V60, V80) ■ 플라스틱 브라켓(PB40, 50) plastic bracket(PB40, 50)