

PT-E800T / PT-E850TKW SUPPLIES AND ACCESSORIES

Ensure the best printing results and a hassle-free experience with these handy accessories.

Included:



Tube cutter (PA-TC-001)
Cuts the tubes into the specified length quickly and professionally.



Ink ribbon (TR-100BK)
100m Black ink ribbon for tube printing.



Cleaner (PA-CL-001)
Cleans the tube to ensure surface is dirt-free before printing.



TZe laminated tapes
Suitable for both office and industrial use, TZe laminated tapes are weatherproof, waterproof, high and low temperature, chemical, fade, abrasion resistant that are prone to wear and tear.



Conveyance rollers (PA-RL-001, PA-RL-002, PA-RL-003)
Ensures the tubes move smoothly through the tube printer.

Optional Add-on:

Rechargeable Li-ion Battery: PA-BT-4000LI
Battery Base: PA-BB-003

Keep your tube printer fully powered when unplugged with rechargeable battery.



brother
at your side

www.brother.com.sg

Android™ is a trademark of Google Inc. Apple® is a trademark of Apple® Inc., registered in the U.S. and other countries. Microsoft® Windows and other Microsoft® products referenced herein are either registered trademarks of Microsoft® Corporation in the U.S. and/or other countries. Brother and its logo are trademarks of Brother Industries Ltd., Japan.

All specifications are subjected to change without notice. All registered trademarks referenced herein are property of their respective companies.



P-touch

brother
at your side



TOUGH LABELS FOR TOUGH JOBS

MAXIMUM DURABILITY. MAXIMUM SAVINGS.



PT-E800T and PT-E850TKW

Get the job done in no time with these robust industrial tube printers.



Twin Engines

Meet the first industrial printers with twin engines. With just one tube printer, you can print on tubes, labels of up to 36mm and other applications including warning signs and tags.



Fuss Free

Switch between tube and label printing without replacing or re-inserting the supplies. Need to replace worn-out parts? It can be done in just a few simple steps.



Perfectly Portable

Get the tube printer working wherever, whenever with the rechargeable Li-ion battery* and wireless capability.

PT-E800T



PT-E850TKW



Durable Labels

The tube printers are compatible with TZe laminated tape, the toughest laminated labels in the market. Ideal for industrial use, TZe laminated tape is resistant to water, grease and harsh weather conditions.



Maximum Printability

Print more on each label and ensure the legibility of your text with the benefit of additional printable height.



Compact Design

The keyboard can be placed directly on top of the printer, saving extra space on every workplace.

*The rechargeable Li-ion battery and battery base have to be purchased separately.

START PRINTING IN 3 SIMPLE WAYS. HERE'S HOW.

You can print from the keyboard, PC or mobile app. It's as simple as it gets.

1 Print via keyboard (tube and label printing)



Design your tube or label artwork from scratch. Alternatively, for ease of use, use the keyboard to select a template.



Select print option via the tube printer's keyboard



Hit print

2 Print via PC (tube and label printing)



Use Brother Cable Label Tool software or Brother P-touch Editor software to design templates



Select print option on PC



Select the file to print

3 Print via mobile (label printing only)



Design label artwork on mobile device using the Mobile Cable Tool or Brother iPrint&Label app



Select print option on the mobile app



Select the file to print

SPECIFICATION



PT-E800T

PT-E850TKW

Tube		
Compatible Tube Diameter	2.5 - 6.5mm	
Supported Tube Type	PVC	
Max Print Height for Tube	6mm	
Tube Print Speed	40mm/sec	
Multi Line Printing for Tube	-	Up to 2 lines
Label		
Tape Type	TZe, HGe, HSe (Heat Shrink Tube)	
Maximum Tape Width	Up to 36mm	
Label Print Resolution	360dpi	
Label Print Speed	60mm/sec	
Cutter	Auto and half cutter	
Multi Line Printing for Label	-	Up to 17 lines
Label Collection	-	Available in Brother iPrint&Label Mobile app
Brother iPrint&Label app	-	Yes
Brother Mobile Cable Tool app	-	Yes
General		
Machine Dimensions (W x D x H) mm	338mm x 188mm x 151mm	338mm x 188mm x 151mm 338mm x 188mm x 173mm (with keyboard)
Interface	USB	USB / WiFi
Host Device	PC	Keyboard / PC / Mobile Device
Numbering Function	Normal / Octal / Hexadecimal / Alphabet	
Barcode Printing	Yes	
Items included in the box	TZe-261 36mm Black on White Laminated tape, 8m long TR-100BK Black ink ribbon, 100m long AD-9100ESA AC Power Adapter	



PT-E 100VP

A compact, lightweight industrial labelling tool that is easy to carry on any job site.



PT-E 300VP

Interactive menu for industrial applications and smart technology help reduce key strokes and time to layout and print a label.



PT-E 550WVP

Industrial wireless handheld labelling tool which allows direct printing from PC or mobile devices.

MODELS	PT-E 100VP	PT-E 300VP	PT-E 550WVP
Types of Tape	TZe Laminated Tape HGe Laminated Tape	TZe Laminated Tape HGe Laminated Tape HSe Heat Shrink Tube	
Tape size (Max width)	12mm	18mm	24mm
Print Speed	20mm/sec	20mm/sec	30mm/sec
Print Resolution	180 dpi		
Power Source	AC Power Adapter 6 x AAA Alkaline Batteries	AC Power Adapter Li-ion Battery 6 x AA Alkaline Batteries	AC Power Adapter Li-ion Battery 6 x AA Alkaline Batteries
PC Connectivity	X	X	O
Interface	Standalone		Standalone USB connection WiFi connection
Barcode printing	X	O	O
QR code printing	X	X	X - standalone O - PC connectable
Database Connection	X	X	O
Number of lines printable	2	5	7
Number of Built-in Symbols	200	384	
Cut Option	Manual Cutter		Auto Cutter
Print Preview	O	O	O
Compatible Mobile Apps	NA		Brother iPrint&Label Mobile Cable Label Tool Mobile Transfer Express
Dimensions (W x H x D)	111mm x 58mm x 204mm	133mm x 220mm x 69mm	126mm x 250mm x 94mm
Weight	0.4 kg	0.74 kg	1.05 kg
Packaging	Carrying Case		
Items included in the box	AD-24ES UK AC Power Adapter TZe-FX221 9mm Black on White Flexi-iD laminated tape, 8m long	AD-E001 AC Power Adapter BA-E001 Li-ion Battery TZe-S221 9mm Black on White Strong Adhesive laminated tape, 8m long	AD-E001 AC Power Adapter BA-E001 Li-ion Battery TZe-FX221 12mm Black on White Flexi-iD laminated tape, 8m long

CUSTOMISE YOUR LABEL

P-touch Editor Design Software

A complete software package that includes label design and drawing tools, auto formats, symbols, barcodes and more. Create labels virtually anywhere.

Its versatility allows it to print anything that is display on the PC. Use pre-designed templates or custom design with multiple fonts and graphics and screen capture functions. The possibilities are endless.

b-PAC Software Development Kit

Perfect application to directly print from other software applications such as Microsoft® Excel® or Access® without re-entering data or running separate programs.

Packed with a developers' toolbox of documentation, sample code and a client version of the b-PAC software program that enables Visual Basic or C++ programmers to quickly understand how to use the b-PAC codes.

BROTHER MOBILE APPS



Brother iPrint&Label

Print labels from Apple® or Android™ devices on wireless network. It will automatically search for supported devices on local wireless network once it is connected to Wi-Fi.



Mobile Cable Label Tool

Design to create labels for telecom, datacom and electrical identifications on demand. Print labels from Apple® or Android™ devices on wireless network.



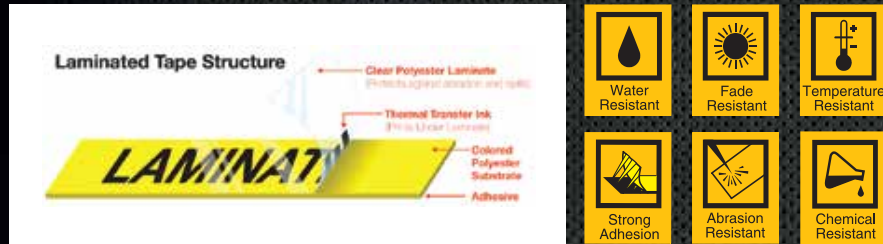
Mobile Transfer Express

This app allows the use of mobile device to transfer compatible label templates, databases and images with P-touch Transfer Manager (Windows version) into an electronic labeller.

DURABLE LAMINATED LABEL

Brother TZe Laminated Labels

Designed to withstand water, grease, fade and abrasion. It can be used in both hot and cold as well as indoor and outdoor environment as it is protected by clear laminated film. Engineered to qualify industrial standards, Ideal for manufacturing, datacom, electrical, medical and general business applications.



SPECIAL TAPES

Flexible Identification Tape

Designed for labelling around sharp bends and cylindrical surfaces, perfect for labelling over an edge on parts around hydraulic and electrical connectors as well as small curved surfaces such as tubing, cable and wire flagging applications.

- Good for:
- Wrapping, flagging wires and cables
 - Cylindrical surfaces
 - Conduits
 - Sharp bends
 - PVC pipes
 - Rods



Strong Adhesive Tape

Laminated and strong adhesive with up to twice the adhesive strength of laminated tapes. Made with a "softer" adhesive that instantly fills recessed surfaces for more surface area contact, it is excellent for labelling textured, rough or uneven surfaces like those in typical plant, field and manufacturing operations.

- Good for:
- Uneven, rough and textured surfaces
 - Slippery painted metal surfaces
 - Powder-coated surfaces
 - Patch panels
 - Utility cabinets
 - Plants



ELECTRICAL FUNCTIONS

FACEPLATE

Essential to create labels for electrical outlets, wall plates and outlet covers.



CABLE WRAP

Essential to create labels that wraps around cables or wires.



CABLE FLAG

Essential to create labels to identify very thin cables such as optical fibres.



PATCH PANEL

Essential to create labels to identify various type of panels such as network patch, distribution boards and terminal blocks.



SERIALISED PRINTING

Essential to create labels with serial numbering.

