

TWT-RC□□-450(2)

■ SPECIFICATIONS

- 3-Phase,3-Wire method
- High performance under small leakage current
- Efficient performance under motor noise
- High filterings by double filters
- Excellent Filtering for Normal Mode and Common Mode Noise



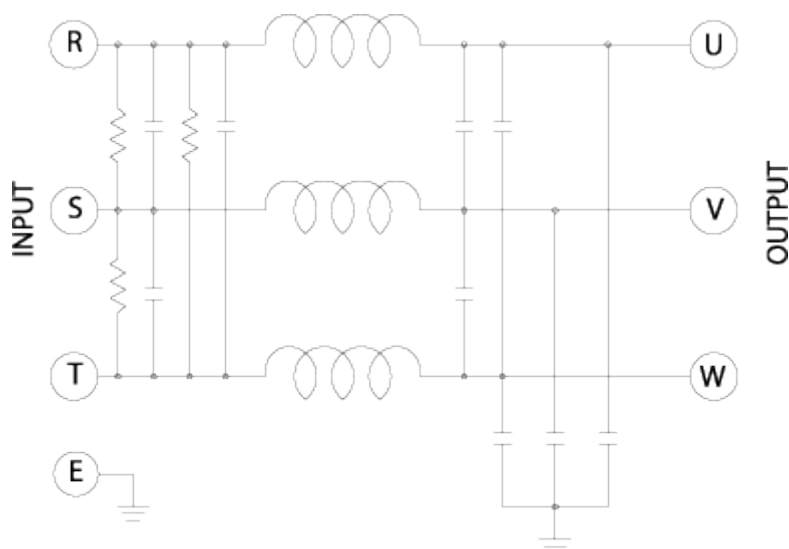
■ APPLICATIONS

- General Purpose, Inverter
- FA and OA Equipments
- Personal Computer and peripherals.
- Digital and Measuring Equipments
- Communication Equipments

■ SPECIFICATIONS

MODEL	TWT - RC20 - 450	TWT - RC30 - 450	TWT - RC40 - 450
RATED CURRENT	20A	30A	40A
RATED VOLTAGE	450 VAC		
TEST VOLTAGE	1,500V 10mA between I/O terminals and Earth for 1 minute		
INSULATION VOLTAGE	500VDC 300Mohm between I/O terminals and Earth		
LEAKAGE CURRENT	2 mA Max		
TEMPERATURE RISE	40°C Max		
OPERATING TEMPERATURE	-25 ~ +85°C		

■ Block Diagram



■ Dimensions (Units:mm)