

Housing Specifications

Housing material	PA, green, UL94 V0	Mounting torque max.	0.5 Nm
Weight	RPM1 approx. 15g RPM2 approx. 20g	Operating temperature	-20° to + 70°C [-4 to +158°F]
Terminal screws	M3	Storage temperature	-40° to + 100°C [-40° to +212°F]
Terminal cable size max. (stranded)	1.5mm ²	DIN rail guide	DIN EN 50022, 50035

DIN Adaptor for 1-phase SSRs

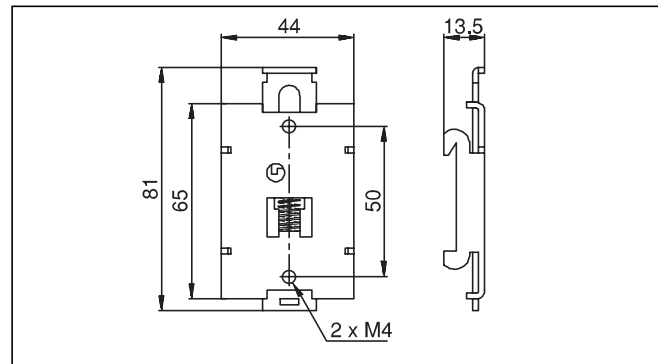
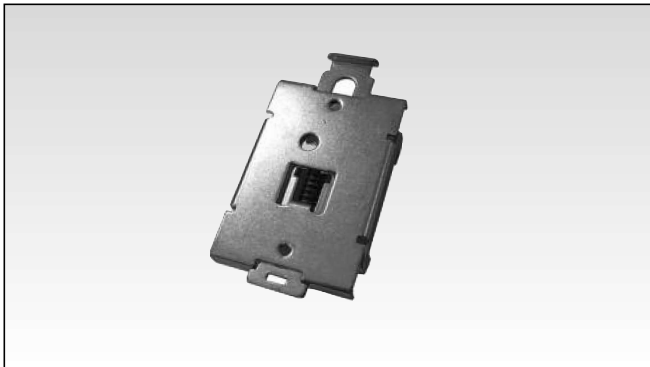
DIN rail adaptor module for mounting the 1-phase SSR series RA, RD, RM, RS and RAM directly on DIN rail.

Suffix H8 added to SSR part no. refers to factory mounted DIN clip. Conditions apply. Please ask your Sales representative for further details.

Ordering Key

RHS00

Material	Electroplated steel
Thermal resistance	12.3 °C/W (>10W)



Dimensions in mm